

## CNC Marking Heads for use with standard type or custom stamps

### Tapmatic MH Series Marking Heads



**Eliminate the need for expensive secondary marking operations.** The Marking Head allows you to mark the work piece during the machining process.

**Simple to install on Machining Centers, CNC lathes or even manually controlled conventional machines.** Compact in size, they fit easily in the tool magazine or turret without interference.

**With the Marking Head, no rotation is required.** Simply advance the head against the work piece a short distance to charge the internal impact system and rapid feed away.

**The impact force and marking depth can be adjusted by turning the knurled sleeve.**

**The Marking Heads shock absorption system cushions any recoil effect on the machine spindle or turret.**

**With the Marking Head you can hold standard type or custom made stamps.** Mark part numbers, date codes, batch codes, logos or other information.

**The marking location and depth are accurate and consistent.**

**Characters and stamps are securely held and can be changed quickly.**

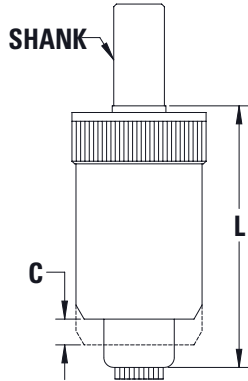
**The Marking Head is fast.** Stamping the work piece takes less than one second.



## CNC Marking Heads for use with standard type or custom stamps

### How to Order

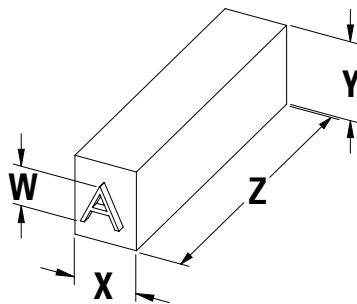
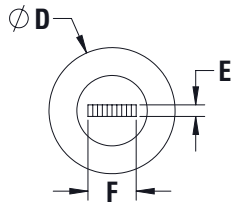
Please select the Marking Head with the shank to fit your application. Please order accessories like standard type or custom stamps separately. Please note the Marking Head accepts standard type directly or you can use one of the separate Type Holders for quick replacement of characters and fast change over.



### MH Marking Heads

Model	Order code	Shank	E	F	D	L	Stroke C	Weight kg
MH 1/2	575020TH	20 mm	6.4	24.5	62	128	12	1.6
	575025TH	25 mm						
	575075TH	3/4"						
	575010TH	1"						
	575003TH	No.3 Morse						
MH 3/4	577525TH	25mm	6.4	40	86	172	18	3.4
	577510TH	1"						

**Note:** The impact force of each marking head may be adjusted by turning its knurled sleeve. For softer materials like plastic we also have the ability to deliver a Marking Head with lighter springs. Please just let us know the details about your specific application for a recommendation.



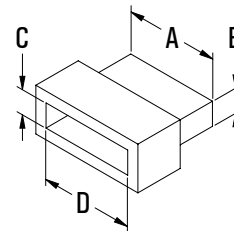
### Standard Type Dimensions

W	X	Y	Z	Order code 26 Letters	Order code 10 Numbers	Order code Blank Spacer
1	1.6	6.4	22.2	5707111006	5707101000	5707014002
1.5	1.6	6.4	22.2	5707112009	5707102003	5707014002
2	2	6.4	22.2	5707113001	5707103006	5707015005
2.5	2.4	6.4	22.2	5707114004	5707104009	5707016008
3	3.2	6.4	22.2	5707115007	5707105001	5707017000
4	4	6.4	22.2	5707120001	5707118008	5707021008
5	4.8	6.4	22.2	5707117002	5707106004	5707018003
6	6.5	9.5	19	5707950 *	5707951 *	5707952 *

**Note:** To order individual letters or numbers please use the set order code shown above followed by the desired character.  
 FOR EXAMPLE: "5707111006D" for the letter D character with height of 1mm.  
 \* Only for use with type holder 5775THILG

### Type Holders for fast change over

Model	Order code	A	B	C	D
MH 1/2	5750THI	24	6.35	6.4	24
MH 3/4	5775THI	40	6.35	6.4	40
MH 3/4	5775THILG	40	6.35	9.6	40



### Custom Stamps Available on Request

**Note:** Tapmatic can also supply custom stamps to fit the Marking Heads. Please let us know the details of your application and we will be pleased to provide a proposal drawing and quote.