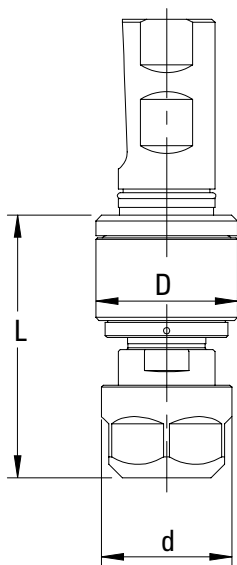


Synchronous feed tap holders with micro length compensation and adjustable start force



Features and Advantages

- for backlash compensation in axial and radial direction
- eliminates pressure on the tap, thereby perfect threads and up to double tap life
- adjustable start force for applications requiring higher thrust forces to start the tap.
- steel collets ER-GB, modular shank versions
- internal coolant system up to 30 bar (BCS version for up to 80 bar)

How to Order

Please select the tap holder (A) and SK or BT shank (C), to fit your machine. Please order accessories like collets and sealing gaskets separately as they are not included.

(A) Tap Holder SelectaFlex® Straight Shank and Weldon Flat, Adjustable Thrust

Model	Order code no BCS	Capacity (steel)	Straightshank Ø mm	Collets	Axial compensation mm	Dimensions			Weight kg	Order code for BCS version	L
						L mm	d mm	D mm			
SX10	44102511	M2–M5	25	ER11	± 0.5	52	19	26	0.4	44102511S	52
SX50	44502520	M4–M12	25	ER20	± 0.5	63	34	37	0.5	44502520S	68
SX75	44752525	M10–M20	25	ER25	± 0.5	83	42	44	1.0	44752525S	88
SX100	441002540	M20–M25	25	ER40	± 0.5	116	63	63	1.8	441002540S	121
SX150	441504050	M22–M48	40	ER50	± 2.0	153	78	75	4.0	441504050S	158

Note: When using internal coolant of more than 30 bar, we recommend using our Balanced Coolant System. The SX high pressure coolant models (BCS) include a sealing disk nut which adds 5 mm to «L» dimension. When using Roll Form Taps, the chuck's tapping capacity must be reduced by 25%. All dimensions are shown in mm. 25.4mm = 1"

