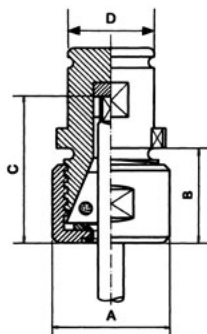


## Quick-change collet chuck adapters for rubber flex collets (RF)



Tap holders with various or adjustable back jaws for quick change tap chucks TA and NC. Only 2 multi-range collets (RF) per type necessary to cover capacity.

### Delivery

Accessories include wrench and necessary square drives for the specified capacity. Please note that rubber flex collets are also included

Model	Order code	Tap size	Collets Rubber Flex Included	Dimensions			
				A mm	B mm	C mm	D mm
TF0	29350	M1.4–M7	21600	18.6	18.6	21.0	13
			21700				
TF1	29351	M3–M12	22100	27.4	18.6	27.0	19
			22200				
TF2	29352	M5–M18	24100	37.2	24.6	38.1	31
			24500				
TF3	29353	M10–M30	26100	54.0	31.8	50.5	48
			26200				

## Rubber Flex multi-range collets



Rubber Flex collets for TAPMATIC tapping attachments and chucks.

Tapping Head capacity	RF Collet Order code	Clamping Capacity (mm)	Tap Capacity Metric Sizes (DIN 371, 374)	Tap Capacity Inch Sizes	Standard or Special Size
M1.4 - M7 #0 - 1/4"	21500	1.0–2.5	M1.6	None	Special
	21600	2.5–4.5	M1.6-M4	#0-#8	Standard
	21700	4.5–6.5	M4-M6	#10-1/4"	Standard
M3 - M12 #6 - 1/2"	22000	4.5–8.0	M4-M10	#10-1/4"	Special
	22100	3.5–6.5	M3-M6	#0-1/4"	Standard
	22200	6.5–10.0	M7-M12	5/16"-1/2"	Standard
	22300	2.0–4.5	M1.6-M4	#0-#8	Special
M5 - M18 #10 - 3/4"	24000	7.0–13.0	M7-M16	5/16"-5/8"	Special
	24100	4.5–10.0	M4-M12	#10-1/2"	Standard
	24300	2.8–7.0	M2-M7	#0-1/4"	Special
	24500	9.0–15.0	M10-M18	1/2"-3/4"	Standard
M10 - M30 1/2" - 1 1/8"	26100	10.0–16.0	M10, M14-M20	9/16"-3/4"	Standard
	26200	16.0-23.0	M20-M30	13/16"-1 1/8"	Standard